

25 YEARS & GROWING



# FRIENDS *of* TREES

2013 Annual Report



# 2013

This year Friends of Trees turns 25 years old. In this quarter century, we've planted more than half a million trees with over 100,000 volunteers. What an accomplishment!

Over the years, like the trees we plant, FOT has spread our influence through grassroots community involvement and branching out to new neighborhoods and natural areas.

We partnered with individuals, foundations, government agencies, municipalities, corporations, and other organizations. We've gratefully received unwavering support from our volunteers. Together, this tree family has helped grow and maintain urban forests throughout Oregon and southwest Washington.

And we don't plan to stop there! Over the next 25 years we aim to grow strong as community leaders by continuing to deliver fun, safe, and important place-based environmental programs that will help change the world. After all, the best time to plant a tree is today. The second best was 25 years ago!

Thank you all for your unending support of our success.

See you out planting!

Scott Fogarty, Executive Director

## BOARD OF DIRECTORS

Tess Jordan  
Board President

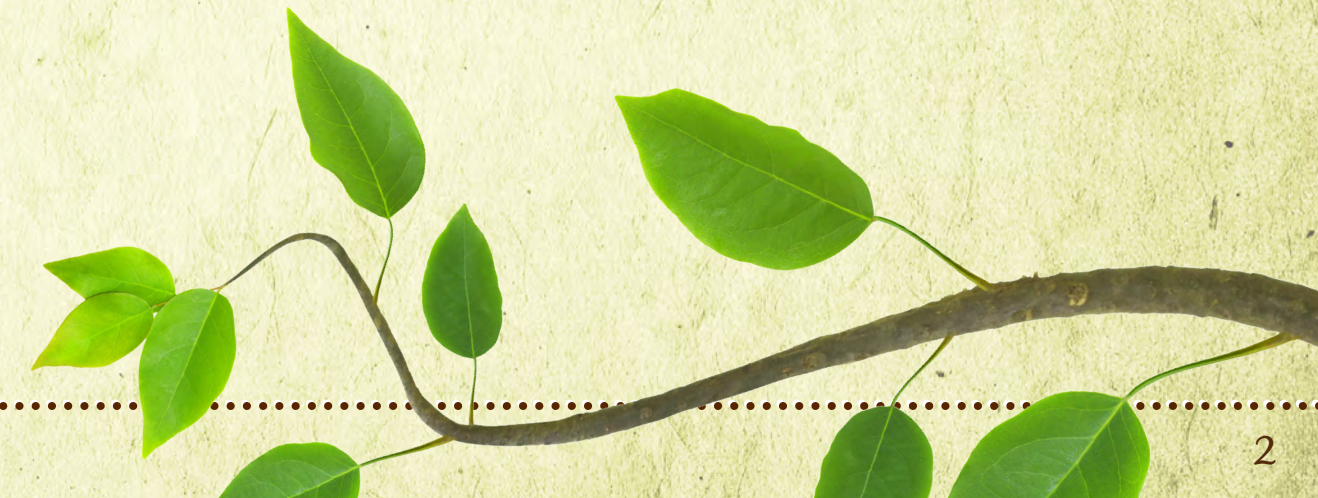
Sky O'Callahan  
Board Treasurer

Nancy Buley  
Alan Hipolito  
Heidi Hu  
Brian Krieg  
Fred Nilsen

Thor Hinckley  
Board Vice President

Tina Beatty-Walters  
Jonathan Brandt

Because  
a *Tree* is Kind Of  
a *Big Deal*





# *What* WE DO

We *empower people* to improve the natural world around them.

4,466 Individual Volunteers Engaged

43,809 Trees & Native Shrubs Planted

85 Green Spaces & Neighborhoods Improved



*"It comes back to that sense of having done something... of using your hands, feeling like you started something and finished something... and the doughnuts help!"*

- Shannon McBride, Crew Leader



# How WE DO IT

Through a *simple solution*:  
Plant Trees. Together.

37,250

Volunteer hours from  
people of all ages



*"This is true peace work.* Bringing neighbors together, creating something for the community and generations to come."

- Jan Buhmann, Eugene Planting Volunteer



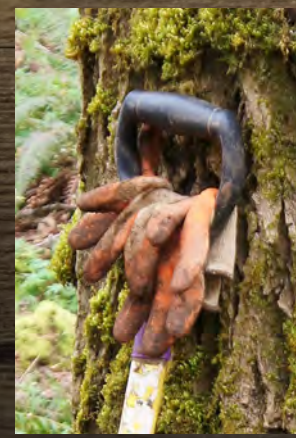
\$258, 722

From Businesses like  
PGE and the Timbers



*"I'm hooked!"* Saturday morning, 7a.m.... It's early, but I can't get my rubber boots on fast enough and get out the door—rain, sun, or freezing cold."

- Neva Knott, FOT Crew Leader



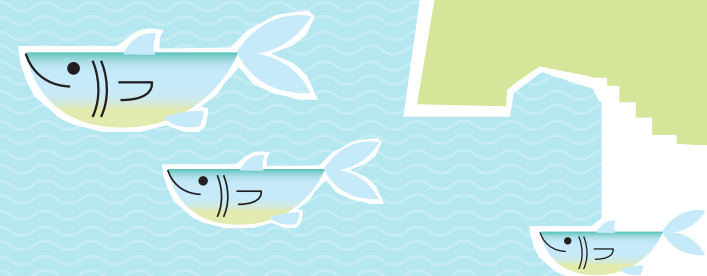


# Where WE WORK

20  
CITIES

2  
STATES

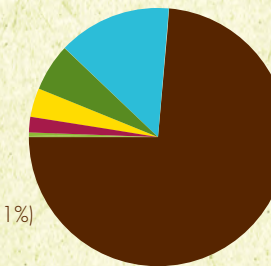
Astoria  
Beaverton  
Damascus  
Durham  
Eugene  
Gresham  
Happy Valley  
Hillsboro  
King City  
Medford  
Milwaukie  
Pendleton  
Portland  
Salem  
Springfield  
Tigard  
Tualitan  
Vancouver  
West Linn  
Wilsonville



# Statement OF ACTIVITIES

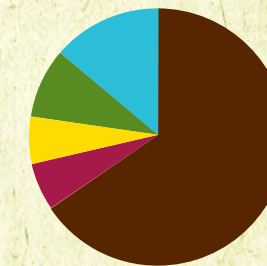
## Revenues

- Government Grants & Contracts (72%)
- Contributions and Grants (11%)
- In-Kind Contributions (7%)
- Tree fees and Supplies (5%)
- Memberships (3%)
- Special Events/Interest Income/Other (1%)



## Expenses

- Neighborhood Trees (62%)
- Green Space Initiative (18%)
- Development (9%)
- Education & Outreach (6%)
- Management & General (5%)



Financial Position for the Fiscal Year Ending August 31, 2013

## Assets

Cash: \$575,960  
Accounts Receivable: \$259,305  
Grants Receivable: \$20,000  
Prepaid Expenses: \$4,352  
Total Property & Equipment: \$794,649

Total Assets: \$1,654,266

## Liabilities and Capital

Accounts Payable: \$46,351  
Accrued Payroll & Related Expenses: \$40,878  
Deferred Revenue: \$0  
Mortgage Payable: \$602,869

Total Liabilities: \$690,098

Temporarily Restricted: \$82,257  
Permanently Restricted: \$3,000  
Total Net Assets: \$964,168

Activities for Fiscal Year Ending August 31, 2013

## Revenues

Government Grants & Contracts: \$1,698,988  
Contributions and Grants: \$258,722  
Tree fees and Supplies: \$104,279  
Memberships: \$77,764  
In-Kind Contributions: \$165,627  
Special Events: \$6,364  
Interest Income: \$655  
Other: \$18,092

Total: \$2,330,491

## Expenses

Neighborhood Trees: \$1,429,432  
Green Space Initiative: \$427,842  
Development: \$216,441  
Education & Outreach: \$127,637  
Management & General: \$122,788

Total: \$2,324,140





# Why WE DO IT



"I met recently with the folks who represent Friends of Trees...I was struck by the straightforward benefits they described from their programs. The greater the canopy coverage of a neighborhood, the lower the crime and the higher the property values. More trees mean cleaner air. What a gift that organizations like Friends of Trees exist and are out there doing the very hard work of recruiting volunteers, money, and resources to carry their mission forward."

- Eric Vines, Gray Family Foundation



## Go Ahead... *Dig in.*







SINCE 1989

[www.FriendsOfTrees.org](http://www.FriendsOfTrees.org)

